




# BUBBLER NOZZLES

Deliver a consistent flow regardless of inlet pressure with pressure-compensating Bubbler Nozzles.

## KEY BENEFITS

- Pressure-compensating for constant water flow at any pressure
- Designed for deep watering of planted areas
- Nozzle threaded for use with Pro-Spray™ Sprinkler Bodies
- Warranty period: 2 years

### MULTI-STREAM BUBBLER PERFORMANCE DATA

Arc	Model	Flow		Radius m
		m³/hr	l/min	
	MSBN-25Q	0.06	0.9	0.30
	MSBN-50Q	0.11	1.9	0.46
	MSBN-50H	0.11	1.9	0.30
	MSBN-10H	0.23	3.8	0.46
	MSBN-10F	0.23	3.8	0.30
	MSBN-20F	0.45	7.6	0.46

#### Notes:

Typical spacing 0.6 to 1.2 m. Flows shown for pressures between 1.0 and 4.8 bar; 100 and 480 kPa.



#### MSBN Installed on PROS-04

Combining Hunter Bubbler Nozzles with Pro-Spray Sprinkler Bodies provides the watering precision of pressure-compensating bubblers paired with the benefit of retracting the nozzle out of sight.

### Multi-Stream Bubbler



## MULTI-STREAM BUBBLER NOZZLES



#### MSBN-25Q

Flow: 0.06 m³/hr;  
0.9 l/min



#### MSBN-50Q/50H

Flow: 0.11 m³/hr;  
1.9 l/min



#### MSBN-10H/10F


Flow: 0.23 m³/hr;  
3.8 l/min



#### MSBN-20F

Flow: 0.45 m³/hr;  
7.6 l/min

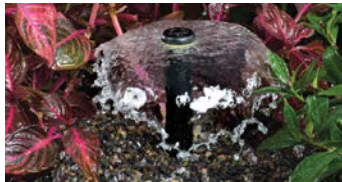
### PCN PERFORMANCE DATA

	Model	Flow		Pattern Type
		m³/hr	l/min	
	25	0.06	0.9	Trickle
	50	0.11	1.9	Trickle
	10	0.23	3.8	Umbrella
	20	0.46	7.6	Umbrella

#### Notes:

Typical spacing 0.3 to 0.9 m. Flows shown for pressures between 1.0 and 4.8 bar; 100 and 480 kPa.

### PCN



## PCN BUBBLER NOZZLES



#### PCN-25

Flow: 0.06 m³/hr;  
0.9 l/min



#### PCN-50

Flow: 0.11 m³/hr;  
1.9 l/min



#### PCN-10


Flow: 0.23 m³/hr;  
3.8 l/min



#### PCN-20

Flow: 0.46 m³/hr;  
7.6 l/min

### 5-CST-B BUBBLER NOZZLE PERFORMANCE DATA

	Pressure		Radius m	Flow	
	bar	kPa		m³/hr	l/min
	1.0	100	1.5	0.07	1.1
	1.5	150	1.5	0.07	1.2
	2.0	200	1.5	0.09	1.4
	2.1	210	1.5	0.09	1.5
	2.5	250	1.5	0.10	1.6

### 5-CST-B



## DUAL-STREAM BUBBLER NOZZLE



### 5-CST-B

# BUBBLERS

Ensure consistent flow regardless of pressure with above-ground, pressure-compensating Bubblers.


## KEY BENEFITS

- Pressure-compensating for constant water flow at any pressure
- Designed for deep watering of planted areas
- ½" threaded inlet for easy installation on a ½" riser

## OPERATING SPECIFICATIONS

- \*SASO Quality Mark Certified
- Warranty period: 2 years

### PCB PERFORMANCE DATA

	Model	Flow		Pattern Type
		m <sup>3</sup> /hr	l/min	
	25	0.06	0.9	Trickle
	50	0.11	1.9	Trickle
	10	0.23	3.8	Umbrella
	20	0.45	7.6	Umbrella

#### Notes:

Typical spacing 0.6 to 1.2 m. Flows shown for pressures between 1.0 and 4.8 bar; 100 and 480 kPa.

PCB



### PRESSURE-COMPENSATING BUBBLERS




PCB\*



PCB-R\*

### AFB PERFORMANCE DATA

	Model	Flow		Pattern Type
		m <sup>3</sup> /hr	l/min	
	AFB	< 0.45	< 7.6	Trickle/ Umbrella

AFB



### ADJUSTABLE FLOOD BUBBLER



AFB