

STRIP PATTERN NOZZLES

Irrigate narrow turf and planter areas accurately with fixed arc strip nozzles.

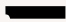





KEY BENEFITS

- Designed for accurate coverage of strip areas
- Available in a variety of models for unique, rectangular spaces
- Built to last in harsh conditions

OPERATING SPECIFICATIONS

- Recommended operating pressure: 2.1 bar; 210 kPa
- Pair with Pro-Spray PRS30 pop-up for pressure regulation to 2.1 bar; 210 kPa
- Warranty period: 2 years

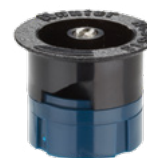
STRIP PATTERN NOZZLE PERFORMANCE DATA

Arc	Pressure		Width x Length m	Flow	
	bar	kPa		m ³ /hr	l/min
LCS-515 	1.0	100	1.2 x 4.2	0.10	1.7
	1.5	150	1.2 x 4.3	0.13	2.1
	2.1	210	1.5 x 4.5	0.15	2.5
	2.5	250	1.5 x 4.5	0.16	2.7
	3.0	300	1.5 x 4.5	0.17	2.8
RCS-515 	1.0	100	1.2 x 4.2	0.10	1.7
	1.5	150	1.2 x 4.3	0.13	2.1
	2.1	210	1.5 x 4.5	0.15	2.5
	2.5	250	1.5 x 4.5	0.16	2.7
SS-530 	1.0	100	1.2 x 8.5	0.21	3.5
	1.5	150	1.5 x 9.0	0.25	4.2
	2.1	210	1.5 x 9.1	0.30	5.0
	2.5	250	1.5 x 9.1	0.33	5.5
SS-918 	1.0	100	2.4 x 5.2	0.27	4.5
	1.5	150	2.7 x 5.5	0.33	5.5
	2.1	210	2.7 x 5.5	0.39	6.5
	2.5	250	2.7 x 5.5	0.43	7.1
CS-530 	1.0	100	1.2 x 8.5	0.21	3.5
	1.5	150	1.5 x 9.0	0.25	4.2
	2.1	210	1.5 x 9.1	0.30	5.0
	2.5	250	1.5 x 9.1	0.33	5.5
ES-515 	1.0	100	1.1 x 4.2	0.10	1.7
	1.5	150	1.2 x 4.3	0.13	2.1
	2.1	210	1.5 x 4.5	0.15	2.5
	2.5	250	1.5 x 4.5	0.16	2.7
	3.0	300	1.5 x 4.5	0.17	2.8

Bold = Recommended pressure



Left Corner Strip
Rectangle: 1.5 m x 4.5 m



Right Corner Strip
Rectangle: 1.5 m x 4.5 m



Side Strip
Rectangle: 1.5 m x 9.1 m



Side Strip
Rectangle: 2.7 m x 5.5 m



Center Strip
Rectangle: 1.5 m x 9.1 m



End Strip
Rectangle: 1.5 m x 4.5 m

RCS-515



NOZZLES